

modern
patchwork®

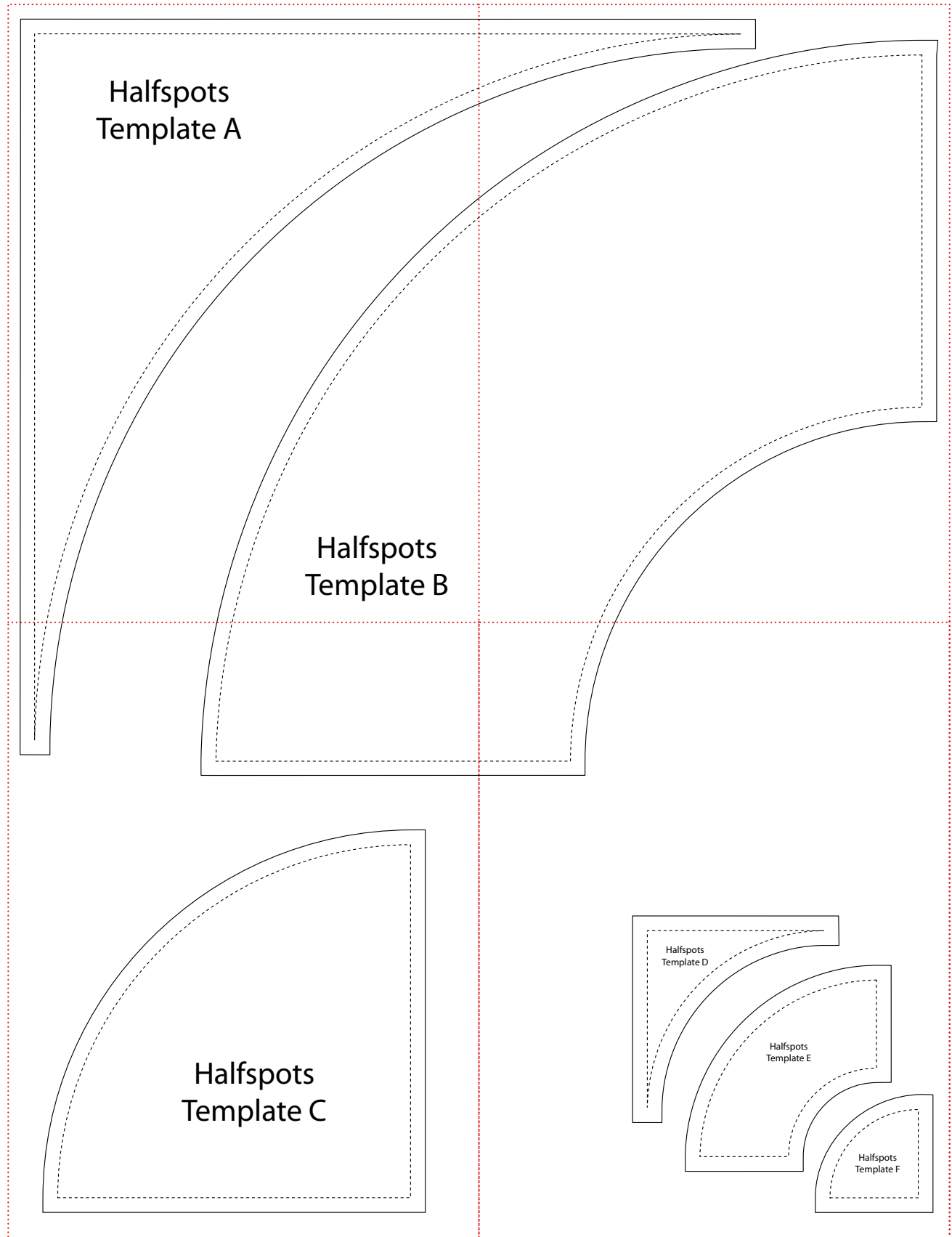
Halfspots Quilt

by **DAISY ASCHEHOUG**



AS SEEN IN
MODERN PATCHWORK
JULY/AUGUST 2017





Halfspots
Template A

The diagram illustrates two halfspot templates, A and B, within a rectangular frame. The frame is defined by a solid black line on the top and left, and a dotted red line on the bottom and right. Inside, a dashed black line forms a smaller rectangle. Two sets of curved lines originate from the bottom-left corner and extend towards the top-right. Each set consists of a solid black line and a dashed black line. The upper set of curves is associated with 'Template A' and the lower set with 'Template B'. The text 'Halfspots Template A' is positioned in the upper-left area, and 'Halfspots Template B' is in the lower-right area.

Halfspots
Template B



TEST SQUARE

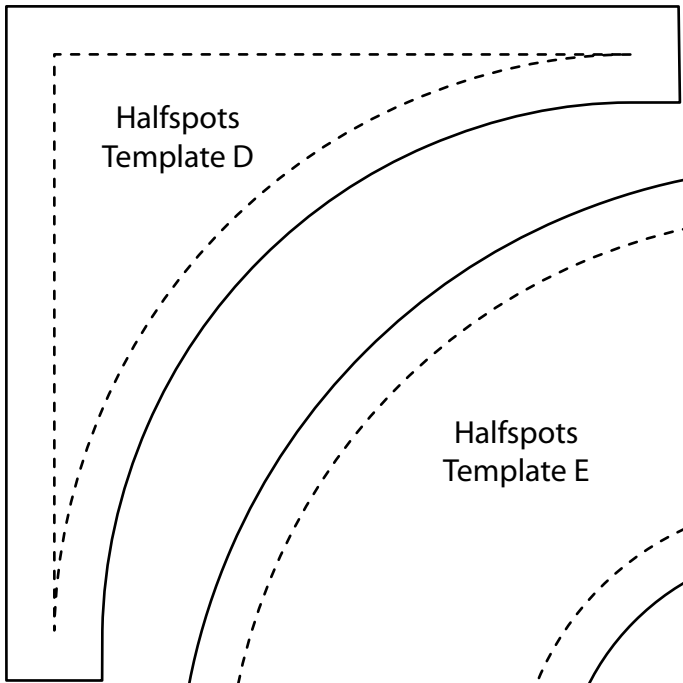
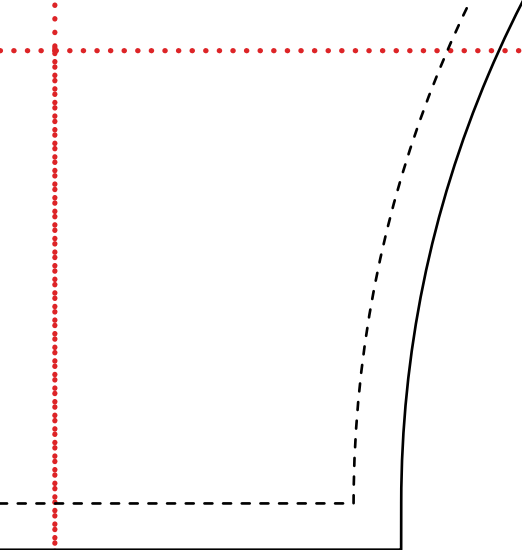
2" x 2"

Assembling the Full-Size Pattern

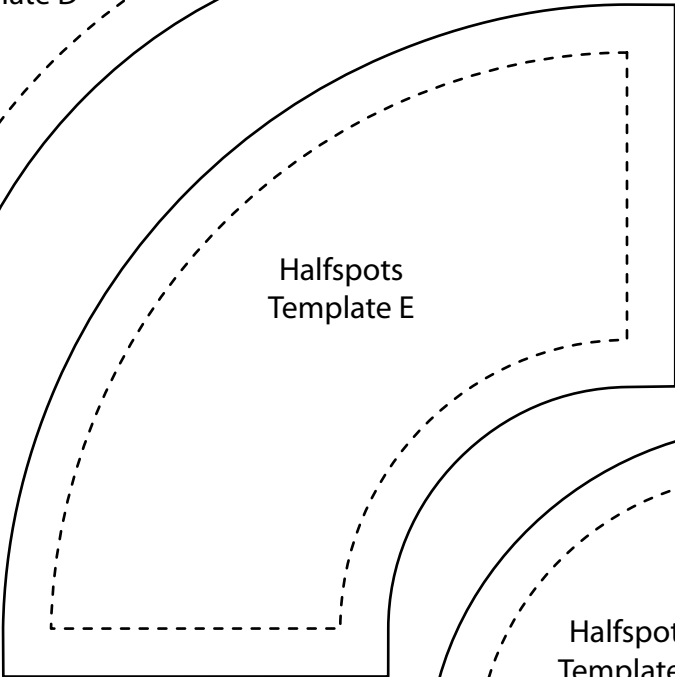
1. Before printing, check that the printer is set to print at 100% with no scaling.
2. Print the page with this Test Square. If the square is 2" x 2", print the remainder of the pattern.
3. The Preview Page shows how the pattern will look when it is assembled. Pages are numbered in rows. The first row of pages is numbered, 1a, 1b, 1c, and so on.
4. To assemble the pattern: trim, overlap, or fold at the dotted line around each page. Tape the pattern together.



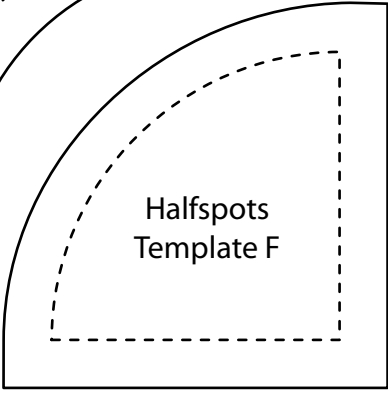
Halfspots
Template C



Halfspots
Template D



Halfspots
Template E



Halfspots
Template F